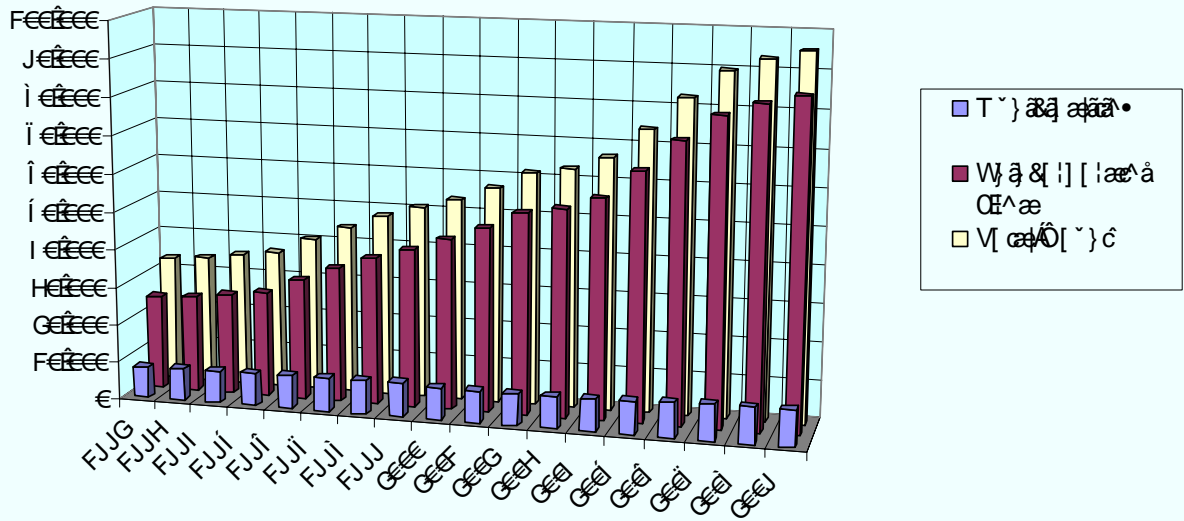


SUMTER COUNTY, FLORIDA POPULATION



Year	Municipalities	Unincorporated Area	Total County
1990	100,000	100,000	200,000
1991	100,000	100,000	200,000
1992	100,000	100,000	200,000
1993	100,000	100,000	200,000
1994	100,000	100,000	200,000
1995	100,000	100,000	200,000
1996	100,000	100,000	200,000
1997	100,000	100,000	200,000
1998	100,000	100,000	200,000
1999	100,000	100,000	200,000
2000	100,000	100,000	200,000