

SUMTER COUNTY ORDINANCE 2023-

AN ORDINANCE OF SUMTER COUNTY, FLORIDA, AMENDING THE FUTURE LAND USE MAP OF THE SUMTER COUNTY COMPREHENSIVE PLAN THROUGH THE SMALL SCALE LAND USE AMENDMENT PROCESS IN ACCORDANCE WITH APPLICATION SS-23-002330; SETTING FORTH THE AUTHORITY FOR SMALL SCALE AMENDMENT OF THE COMPREHENSIVE PLAN FUTURE LAND USE MAP; SETTING FORTH THE PURPOSE AND INTENT OF THE AMENDMENTS; PROVIDING FOR INTERPRETATION; PROVIDING FOR PROVISIONS, SEVERABILITY AND APPLICABILITY, FILING WITH THE DEPARTMENT OF STATE, EFFECTIVE DATE AND ADOPTION.

WHEREAS, Section 163.3161 et. seq., Florida Statutes established the Community Planning Act; and

WHEREAS, Section 163.3187, Florida Statutes, allows small scale land use amendments to be made to the adopted Comprehensive Plan Future Land Use Map; and

WHEREAS, the Board of County Commissioners of Sumter County, Florida has adopted its Comprehensive Plan pursuant to the Act and has now determined that certain amendments to portions of the Future Land Use Map are needed; and

WHEREAS, the Board has provided for opportunity for written comments, public hearings after public notice, provisions for open discussion, communications programs, and consideration of and response to public comments concerning the proposed amendment to the Comprehensive Plan; and

WHEREAS, the County invited written comment and public participation at scheduled public hearings; and

WHEREAS, Ordinance No. 79-9 adopted by the Board of County Commissioners of Sumter County, Florida, on July 18, 1979, Ordinance No. 96-23 adopted by the Board of County Commissioners of Sumter County, Florida on December 16, 1996, and Ordinance No 2019-10 adopted by the Board of County Commissioners on May 28, 2019, designated the Sumter County Planning and Zoning Special Master as the Local Planning Agency for the unincorporated areas of Sumter County, Florida, and set forth the duties and responsibilities of said local planning agency; and

WHEREAS, the Sumter County Planning & Zoning Special Master held a public hearing on the proposed Comprehensive Plan Future Land Use Map amendment on March 06, 2023, and considered the findings and advice of all interested parties submitting comments at the public hearing, and recommended approval of the amendment to the Board of County Commissioners of Sumter County; and

WHEREAS, the Board of County Commissioners of Sumter County held a public hearing on the proposed Comprehensive Plan Future Land Use Map amendment on March 28, 2023, and considered the findings and advice of all interested parties submitting comments at the public hearing, and the recommendations of the Local Planning Agency, and upon complete consideration and deliberation, approved the amendment to the Comprehensive Plan Future Land Use Map for adoption, and

WHEREAS, the Board of County Commissioners of Sumter County, Florida has determined that the adoption of the amendment to the Comprehensive Plan is in the best interests of the health, safety and welfare of the citizens of Sumter County, Florida.

NOW, THEREFORE, BE IT ORDAINED BY THE BOARD OF COUNTY COMMISSIONERS OF SUMTER COUNTY, FLORIDA, AS FOLLOWS:

Section 1. Authority.

This Ordinance is adopted in compliance with, and pursuant to the Community Planning Act, Section 163.3161, et. seq., Florida Statutes.

Section 2. Purpose and Intent.

It is hereby declared that the purpose and intent of the adopted amendment is to make the Comprehensive Plan better able to preserve and enhance present advantages; encourage the most appropriate use of land, water, and resources consistent with the public interest; overcome present handicaps; and deal effectively with future problems which may result from the use and development of land within the unincorporated areas of Sumter County, Florida. Specifically, the amendment changes the land use designation on the Future Land Use Map to Agriculture (Attachment A). The nature of this change is to provide a land use development consistent and complementary with the character of development within the surrounding properties and local area. The change allows the Future Land Use Map to depict a land use designation capable of Agricultural development.

Section 3. Adoption of Amendments to Certain Elements of the Comprehensive Plan.

The Future Land Use Element and the Future Land Use Map of the Sumter County Comprehensive Plan are hereby amended as per the amendments attached hereto, and as amended, is the official Comprehensive Plan for the unincorporated area of Sumter County, Florida.

Section 4. Interpretation.

The language and provisions of this ordinance and the Comprehensive Plan, as amended, shall be construed in pari materia with Section 163.3161, et. seq., Florida Statutes. Definitions provided in Section 163.3161, et. seq., Florida Statutes as they apply to interpretation of this ordinance are incorporated herein by reference as the same may from time to time be amended.

Section 5. Severability.

If any section, subsection, paragraph, sentence, clause, or phrase of this ordinance is for any reason held by any court or other forum of competent jurisdiction to be invalid, the validity of the remaining portions of this code shall continue in full force and effect.

Section 6. Effective Date.

This ordinance shall become effective as provided by law.

ADOPTED BY THE SUMTER COUNTY BOARD OF COUNTY COMMISSIONERS, SUMTER COUNTY, FLORIDA, THIS 28TH DAY OF MARCH, 2023.

SUMTER COUNTY BOARD OF COUNTY COMMISSIONERS

CRAIG A. ESTEP, CHAIRMAN

ATTEST:

**GLORIA HAYWARD,
SUMTER COUNTY CLERK OF COURT
BY: CAROLINE ALRESTIMAWI, DEPUTY CLERK**

Attachment A

FROM THE WEST 1/4 CORNER OF SECTION 14, TOWNSHIP 20 SOUTH, RANGE 22 EAST, SUMTER COUNTY, FLORIDA, RUN N0005'41"W, ALONG THE WEST BOUNDARY OF SAID SECTION 14, A DISTANCE OF 70.77 FEET TO A FOUR (4) INCH SQUARE CONCRETE MONUMENT WITH DISK MARKED: LS 3522, ON THE NORTH RIGHT OF WAY OF C-470 MARKING THE POINT OF BEGINNING OF THE FOLLOWING DESCRIBED PARCEL: FROM SAID POINT OF BEGINNING, CONTINUE N00105.41"W, ALONG SAID WEST BOUNDARY OF SECTION 14, A DISTANCE OF 660.00 FEET TO A FOUR (4) INCH SQUARE CONCRETE MONUMENT; THENCE S8957'19"E, A DISTANCE OF 330.00 FEET TO A FOUR (4) INCH SQUARE CONCRETE MONUMENT; THENCE S0005'41"E, A DISTANCE OF 660.00 FEET TO A FOUR (4) INCH SQUARE CONCRETE MONUMENT ON THE NORTH RIGHT OF WAY OF C-470; THENCE N8957.19"W, ALONG SAID RIGHT OF WAY, A DISTANCE OF 330.00 FEET TO THE POINT OF BEGINNING AND END OF THIS DESCRIPTION.

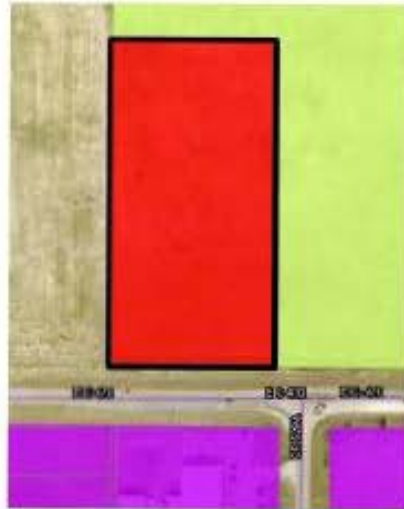
A location map of the subject properties is attached as **Map 1**. The Future Land Use Map with the existing land use designation and proposed land use designation are shown on the subject parcels is attached as **Map 2**.

MAP 1

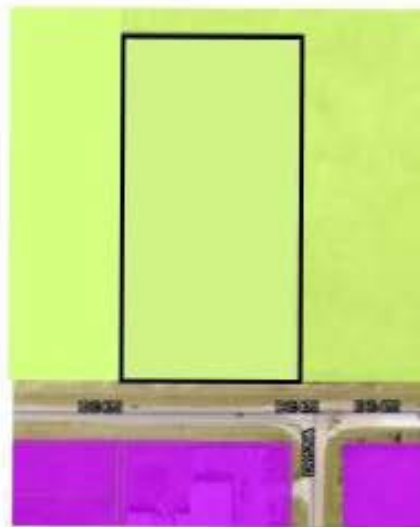
General Location



MAP 2 Existing and Proposed Future Land Use



Existing Future Land
Use Designation - Commercial



Proposed Future Land
Use Designation - Agriculture



Agriculture



Commercial